

● Location of the Development
發展項目的位置

Survey and Mapping Office, Lands Department, The Government of HKSAR © Copyright reserved-reproduction by permission only.

香港特別行政區政府地政總處測繪處©版權所有，未經許可，不得複製。

Adopted from part of the aerial photograph taken by the Survey and Mapping Office of Lands Department at a flying height of 3,000 feet, Photo No.E102349C, dated 26 July 2020.

摘錄自地政總署測繪處於2020年7月26日在3,000呎飛行高度拍攝之鳥瞰照片，編號為E102349C。

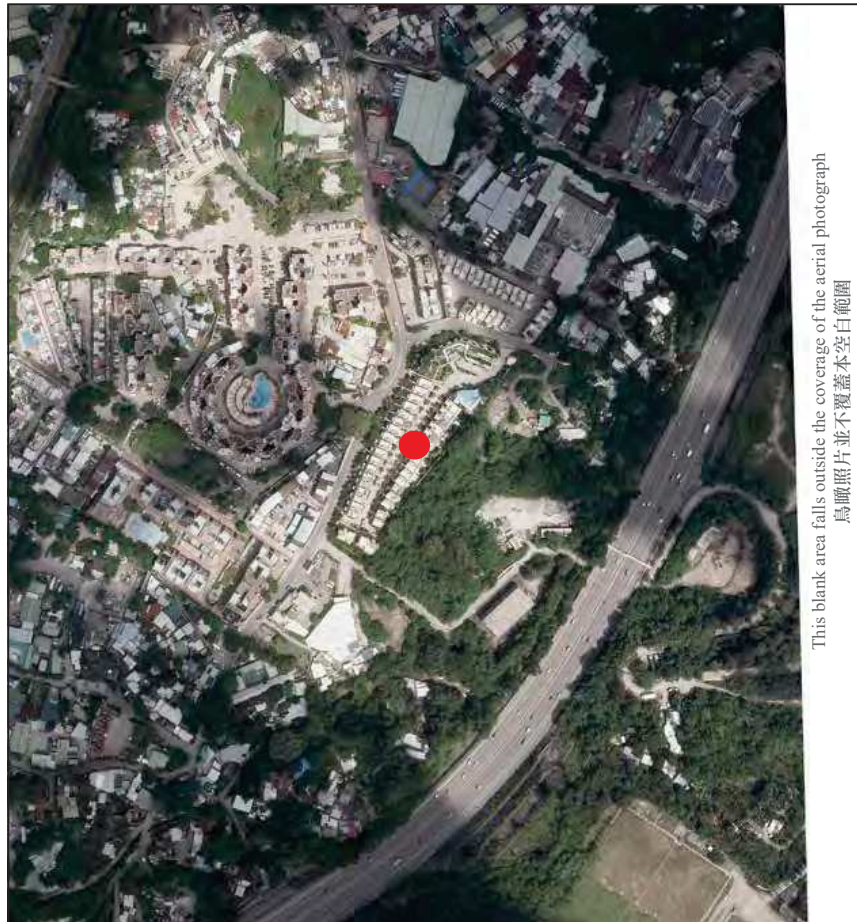
Notes:

1. The above aerial photograph is available for free inspection at the sales office(s) during opening hours.
2. The above aerial photograph shows slightly more than the area required under the Residential Properties (First-hand Sales) Ordinance due to the technical reason that the boundary of the Development is irregular.

備註：

1. 上述鳥瞰照片可於開放時間向售樓處免費查閱。
2. 由於發展項目的邊界不規則的技術原因，上述鳥瞰照片顯示稍多於〈一手住宅物業銷售條例〉所要求顯示的範圍。

AERIAL PHOTOGRAPH OF THE DEVELOPMENT
發展項目的鳥瞰照片



This blank area falls outside the coverage of the aerial photograph
鳥瞰照片並不覆蓋空白範圍

● Location of the Development
發展項目的位置

Survey and Mapping Office, Lands Department, The Government of HKSAR © Copyright reserved-reproduction by permission only.

香港特別行政區政府地政總處測繪處©版權所有，未經許可，不得複製。

Adopted from part of the aerial photograph taken by the Survey and Mapping Office of Lands Department at a flying height of 3,000 feet, Photo No.E140726C, dated 22 August 2021.

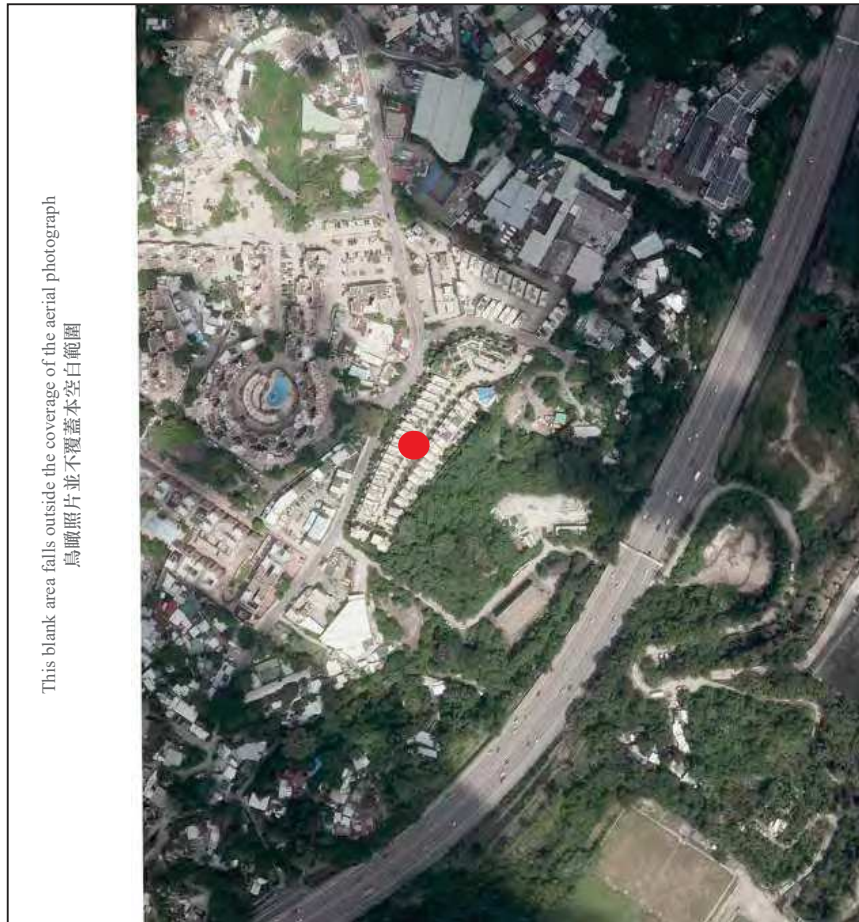
摘錄自地政總署測繪處於2021年8月22日在3,000呎飛行高度拍攝之鳥瞰照片，編號為E140726C。

Notes:

1. The above aerial photograph is available for free inspection at the sales office(s) during opening hours.
2. The above aerial photograph shows slightly more than the area required under the Residential Properties (First-hand Sales) Ordinance due to the technical reason that the boundary of the Development is irregular.

備註：

1. 上述鳥瞰照片可於開放時間向售樓處免費查閱。
2. 由於發展項目的邊界不規則的技術原因，上述鳥瞰照片顯示稍多於〈一手住宅物業銷售條例〉所要求顯示的範圍。



● Location of the Development
發展項目的位置

Survey and Mapping Office, Lands Department, The Government of HKSAR © Copyright reserved-reproduction by permission only.

香港特別行政區政府地政總處測繪處©版權所有，未經許可，不得複製。

Adopted from part of the aerial photograph taken by the Survey and Mapping Office of Lands Department at a flying height of 3,000 feet, Photo No.E140727C, dated 22 August 2021.

摘錄自地政總署測繪處於2021年8月22日在3,000呎飛行高度拍攝之鳥瞰照片，編號為E140727C。

Notes:

1. The above aerial photograph is available for free inspection at the sales office(s) during opening hours.
2. The above aerial photograph shows slightly more than the area required under the Residential Properties (First-hand Sales) Ordinance due to the technical reason that the boundary of the Development is irregular.

備註：

1. 上述鳥瞰照片可於開放時間向售樓處免費查閱。
2. 由於發展項目的邊界不規則的技術原因，上述鳥瞰照片顯示稍多於〈一手住宅物業銷售條例〉所要求顯示的範圍。